

CHANGES	DETAILS	DATE	WRITE	APPROVE
V01	Spec. Sheet First Configuration	2022.03.23	K.M.MOON	S.M.YANG

MODEL	DX300LC-7M	DWG No		1/24
-------	------------	--------	--	------

# DX300LC-7M

[Certified Model Name : DX300LC-7M]

CONTENTS	PAGE
1. GENERAL SPECIFICATION.....	3
2. ENGINE SYSTEM.....	4
- ENGINE PERFORMANCE CURVE.....	6
3. HYDRAULIC SYSTEM.....	7
- PUMP PERFORMANCE CURVE.....	9
4. SWING MECHANISM.....	10
5. TRAVEL SYSTEM.....	11
6. UNDER CARRIAGE .....	12
7. HYDRAULIC CYLINDERS .....	13
8. FRONT .....	14
9. DIMENSIONS AND WORKING RANGE.....	18
10. LIFTING CAPACITIES.....	21
11. PERFORMANCE DATA.....	21
12. NOISE LEVEL .....	21
13. SUB GROUP WEIGHT .....	22
14. USER SERVICE DATA.....	23
15. CIRCUITS.....	24
- HYDRAULIC CIRCUIT : 950102-00853A.....	24
- ELECTRIC CIRCUIT : 950102-00988.....	24

MODEL	DX300LC-7M	DWG No		2/24
-------	------------	--------	--	------

# 1. GENERAL SPECIFICATION

ITEMS		UNIT	STD.	OPT. 1	OPT. 2	OPT. 3	OPT. 4
OPERATING WEIGHT		ton	31.8	31.7	31.6	32.6	31.7-
ENGINE	RATED POWER (Gross)	kW/rpm	202/1,900				
	MAX. TORQUE	N.m/rpm	1157/1,300				
SYSTEM PRESSURE (Work / Travel)		bar	343(363)/343				
SWING SPEED (EFF. 98%)		rpm	9.6				
TRAVEL SPEED (High / Low ) (EFF. 98%)		km/h	2.9 / 5.2				
GRADEABILITY		%(deg)	70(35° )				
GROUND PRESSURE		kg/cm <sup>2</sup>	0.60	0.61	0.61	0.62	-
DIGGING FORCE(ISO)	BUCKET (Nor. / Press Up)	ton	19.1/20.2	19.1/20.2	19.1/20.2	10.0/10.6	19.1/20.2-
	ARM (Nor. / Press Up)	ton	13.2/14.0	15.0/15.8	16.1/17.0	7.1/7.5	11.8/12.4
WORKING RANGE	MAX. DIGGING REACH	mm	10,670	10,365	10,110	17,505	11,195
	MAX. LOADING HEIGHT	mm	7,325	7,045	7,035	11,990	8,985
	MAX. DIGGING DEPTH	mm	7,250	7,000	6,650	13,780	7,900
	MAX. DIGGING HEIGHT	mm	10,245	9,895	9,935	14,190	10,330
	REAR SWING RADIUS	mm	3,230	3,230	3,230	3,230	3,230-
	MIN. SWING RADIUS	mm	4,040	4,075	4,045	6,120	4,045-
TRANSPORTATION DIMENSION	OVERALL LENGTH	mm	10,610	10,710	10,770	14,390	10,705
	OVERALL WIDTH (W/O Protector & Catwalk)	mm	3,200	3,200	3,200	3,200	3,200
	OVERALL HEIGHT	mm	3,370	3,615	3,495	3,475	3,575
	GROUND CLEARANCE (W/O Grouser)	mm	470	470	470	470	470
	TRACK HEIGHT (W/O Grouser)	mm	970	970	970	970	970
	TRACK LENGTH (With Grouser)	mm	4950	4950	4950	4950	4950
	GROUSER HEIGHT	mm	30	30	30	30	30
	TRACK GAUGE	mm	2600	2600	2600	2600	2600
	TUMBLER DISTANCE	mm	4040	4040	4040	4040	4040
OPTION ATTACHMENT	BOOM	mm	6245 / 6245 HD / 10000				
	ARM	mm	2500 / 3100 / 3750 / 2850 HD / 3100 HD / 7000				
	BUCKET(SAE)	m <sup>3</sup>	GP : 0.8 / 1.03 / 1.16 / 1.27 / 1.5 / 1.75				
			H Class : 1.04 / 1.2 / 1.5 / 1.51 / 1.6 / 1.7				
			H+ Class : 1.47				
			S Class : 1.2 / 1.45 / 1.57 / 1.6				
		S+ Class : 1.45					
		Ditch Cleaning : 0.45 / 0.54 / 0.64					
SHOE	mm	600 TG / 700 TG / 800 TG / 850 TG / 600 DG					
COUNTER WEIGHT	kg	STD 5400 / OPT 6400(for SLR)					
Spec. Combination Criteria	STD	BOOM(6245HD), ARM(3100HD), BUCKET(1.5 H Class), SHOE(600 TG)					
	OPTION 1	BOOM(6245HD), ARM(2850HD), BUCKET(1.5 H Class), SHOE(600 TG)					
	OPTION 2	BOOM(6245HD), ARM(2500), BUCKET(1.5 H Class), SHOE(600 TG)					
	OPTION 3	BOOM(10000), ARM(7000), BUCKET(0.64), SHOE(600 TG)					
	OPTION 4	BOOM(6245), ARM(3750), BUCKET(1.5 H Class), SHOE(600 TG)					

MODEL	DX300LC-7M	DWG No	3/24
-------	------------	--------	------

## 2. ENGINE SYSTEM

### 1) ENGINE

SUFFIX	:	DL08-MCE02
RATED HORSE POWER	:	202 kW @ 1,900 rpm (KS-R1004,Gross) 271 HP(275 PS) @ 1,900 rpm(KS-R1004,Gross) 138 kW @ 1,800 rpm (KS-R1004,net) 185 HP(188 PS) @ 1,800 rpm (KS-R1004,net)
MAX. TORQUE	:	1157 N.m @ 1,300 rpm
FUEL CONSUMPTION	:	231.0 g/kW.hr @ RATED SPEED(170 g/PS.hr)
TYPE	:	4-CYCLEWATER-COOLED TURBOCHARGER&INTERCOOLER
DISPLACEMENT	:	7,640 cc
No. OF CYLINDER	:	6
BORE DIA. & STROKE	:	∅108 x 139 mm
COMPRESSION RATIO	:	16.6:1
HIGH IDLE SPEED	:	2,050 ±50 rpm
LOW IDLE SPEED	:	900 ± 50 rpm
STARTING MOTOR	:	24 V x 6.0 kW
DRY WEIGHT	:	770 kg

### 2) ALTERNATOR

VOLTAGE	:	24 V
RATING AMPERES	:	80 A

### 3) BATTERY

SYSTEM VOLTAGE	:	24 V
QUANTITY	:	12 V x 2
CAPACITY (AMP)	:	150 AH

### 4) PUMP DRIVE

DRIVE TYPE	:	FLEXIBLE COUPLING JOINT
PERMISSIBLE TORQUE & RPM	:	320 kgf.m, 3,600 rpm

### 5) AIR CLEANER

TYPE	:	DOUBLE ELEMENT
FILTRATION AREA	:	14.7 m <sup>2</sup> (OUTER), 1.85 m <sup>2</sup> (INNER)
SIZE (DIA.x LENGTH)	:	381 mm x 530 mm
FILTERING EFFICENCY	:	OVER 99.9% AT FULL LIFE

### 6) MUFFLER

SIZE (DIA X LENGTH)	:	340mm X 840mm
---------------------	---	---------------

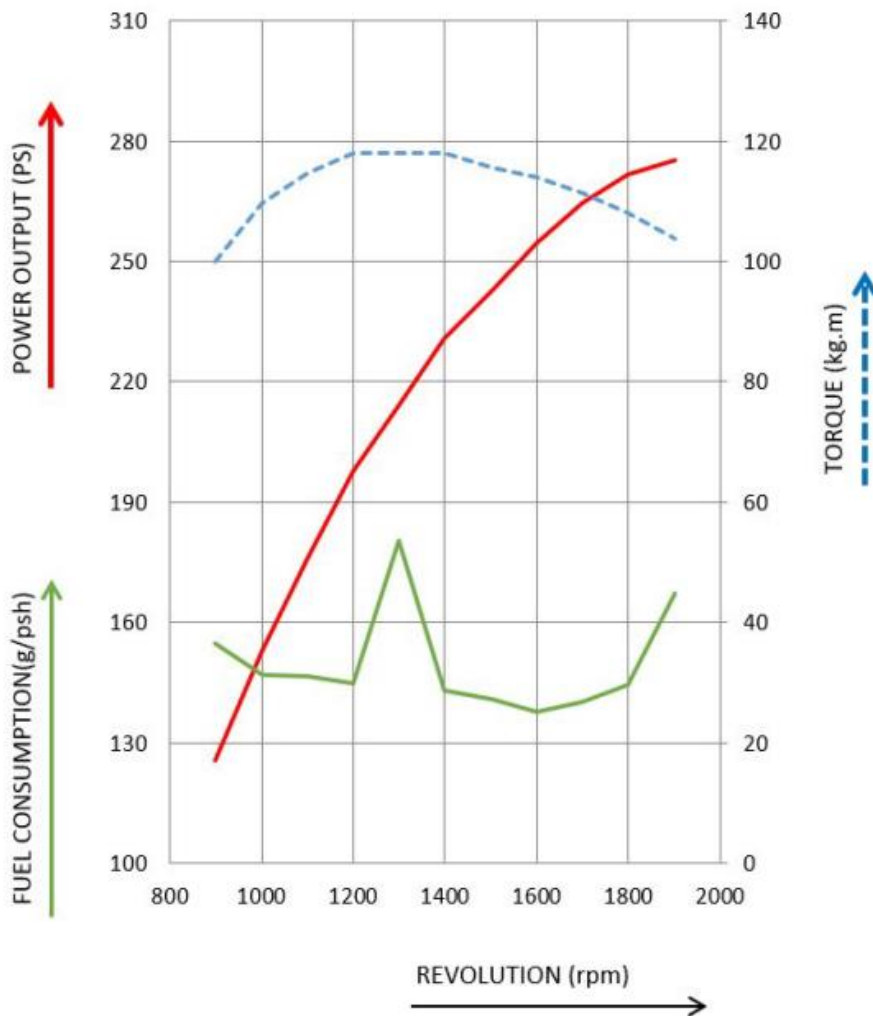
MODEL	DX300LC-7M	DWG No		4/24
-------	------------	--------	--	------

7) FAN	
- FOR RADIATOR	
TYPE	: SUCKER, 8-BLADE, PLASTIC
SIZE	: $\phi$ 762 mm
RPM AT RATED ENGINE RPM	: 1598 rpm
PULLEY RATIO	: 1:0.94
8) RADIATOR	
TYPE	: BAR & PLATE
9) OIL COOLER	
TYPE	: BAR & PLATE
10) CHARGE AIR COOLER	
TYPE	: BAR & PLATE
11) FUEL COOLER	
TYPE	: DRAWN CUP
11) FILTERS	
11-1) FUEL MAIN FILTER	
TYPE	: SPIN ON TYPE
SIZE	: D107.7 x H206.5 mm
FLOW RATE	: 454L/H
EFFICIENCY	: MIN. 98% @ 4 $\mu$ m $\odot$ , (ACC. TO ISO133353)
11-2) WATER SEPARATOR FILTER	
SIZE	: H392xW152xD137mm
NOMINAL FLOW RATE	: 420L/H
FILTRATION EFFICIENCY	: 95% @ 30 $\mu$ m (ACC. TO ISO19438)
WATER SEPARATION EFFICIENCY	: > 93% (ACC. TO ISO16332)
ETP FLOW RATE	: 200L/H @ 1BAR
ETP MAX PRESSURE	: 1.5 BAR
11-3) ENGINE OIL FILTER	
TYPE	: COMBINATION TYPE
SIZE	: D118.4 x H246.9 mm
FLOW RATE	: 106L/MIN
EFFICIENCY	: MIN. 100% @ 30 $\mu$ m / MIN 60% @ 10 $\mu$ m

MODEL	DX300LC-7M	DWG No		5/24
-------	------------	--------	--	------

- ENGINE PERFORMANCE CURVE

CONDITION	SPECIFICATION
BAROMETIC PRESSURE	760 mmHg (25°C)
COOLING FAN	X
ALTERNATOR	X
AIR CLEANER	O
MUFFLER	O



PERFORMANCE STANDARARD	KS-R0071
POWER (MAX , RATED)	202 kW / 1,900 rpm
MAX. TORQUE	1157N.m/ 1,300 rpm
FUEL CONSUMPTION (MAX , RATED)	231.1 g/kW.hr(168 g/ps.hr)

MODEL	DX300LC-7M	DWG No		6/24
-------	------------	--------	--	------

### 3. HYDRAULIC SYSTEM

#### 1) MAIN PUMP

TYPE	:	SWASH PLATE, AXIAL PISTON
QUANTITY	:	2
DISPLACEMENT	:	2 x 160 cc/rev
MAX. FLOW RATE	:	2 x 272 Liter/min @ 1700rpm
WEIGHT	:	245 kg

#### 2) PILOT PUMP

TYPE	:	GEAR
DISPLACEMENT	:	15 cc/rev
MAX. FLOW RATE	:	25.5 Liter/min @ 1700rpm
RELIEF VALVE PRESSURE	:	39 bar(40 kgf/cm <sup>2</sup> )

#### 3) CONTROL VALVE

TYPE	:	PILOT CONTROL
SPOOL DIA.	:	BOOM/ARM/OPT/STRAIGHT TR $\phi$ 31.2 mm, TRAVEL/SWING/BKT $\phi$ 28mm
SPOOL ARRANGEMENT	:	TR, OPT, SWING, BOOM2, ARM1, TL, BUCKET, BOOM1, ARM2
RELIEF VALVE PRESSURE	:	373 bar(380 kgf/cm <sup>2</sup> )
PORT RELIEF VALVE PRESSURE	:	373 bar(380 kgf/cm <sup>2</sup> )
ACCESSARY VALVES	:	BOOM HOLDING VALVE, ARM HOLDING VALVE, BY-PASS CUT VALVE
WEIGHT	:	254 kg

#### 4) REMOTE CONTROL VALVE; WORK/SWING

TYPE	:	PILOT, 1-STAGE, 3-BUTTON
P vs STROKE CHARACTERISTIC	:	6.9 bar (7.0 kgf/cm <sup>2</sup> ) @ 1.0mm 27.5 bar (28.0 kgf/cm <sup>2</sup> ) @ 6.5mm
WEIGHT	:	2.4 kg

#### 5) REMOTE CONTROL VALVE; TRAVEL

TYPE	:	PILOT, 1-STAGE, WITH DAMPER
P vs STROKE CHARACTERISTIC	:	7.4 bar (7.5 kgf/cm <sup>2</sup> ) @ 1.0mm 24.5 bar (25.0 kgf/cm <sup>2</sup> ) @ 4.3mm
WEIGHT	:	7.8 kg

#### 6) PACKAGE SOLENOID VALVE

TYPE	:	DC 24V, 5-SOLENOID VALVE
FUNCTION	:	SAFETY CUT OFF, HAMMER OPERATING TRAVEL 2-SPEED, BREAKER/SHEAR SELECT, 2PUMP

MODEL	DX300LC-7M	DWG No		7/24
-------	------------	--------	--	------

7) ACCUMULATOR

NITROGEN CHARGE PRESSURE : 10 bar (10 kgf/cm<sup>2</sup>)  
 VOLUME : 0.32 Liter  
 WEIGHT : 1.6 kg

8) BY-PASS VALVE

8-1) BY-PASS VALVE (C1)

SIZE : 2-INCH  
 CRACKING PRESSURE : 2 bar (2 kgf/cm<sup>2</sup>) @ 10 Liter/min

8-2) BY-PASS VALVE (C2)

SIZE : 1-1/2-INCH  
 CRACKING PRESSURE : 5 bar (5 kgf/cm<sup>2</sup>) @ 10 Liter/min

9)HYDRAULIC FILTERS

9-1) RETURN FILTER

TYPE : 31.07.17 R 10MM  
 FILTER MATERIAL : GLASS FIBER  
 QUANTITY : 1  
 FILTRATION AREA(SIZE) : 2.79 m<sup>2</sup> (∅ 172 x 415 mm)  
 FILTRATION EFFICIENCY&RATING : 99.5 % (β 10 = 200), 10μ  
 BY-PASS CRACKING PRESSURE : 1.5 bar (1.5 kgf/cm<sup>2</sup>) @ 40 Liter/min

9-2) PILOT FILTER

TYPE : DYF-H9062  
 FILTER MATERIAL : SYNTHETIC FIBER  
 FILTRATION SIZE : ∅ 48.8 x 84 mm  
 FILTRATION EFFICIENCY&RATING : 99.5 % (β 10 = 200), 10μ  
 BYPASS CRACKING PRESSURE : 1.7 bar (1.7 kgf/cm<sup>2</sup>)

9-3) SUCTION STRAINER

TYPE : WIRE MESH  
 FILTRATION SIZE : 0.54m<sup>2</sup> (∅ 200 x 190 mm)  
 FILTRATION RATING : 177μ (80 mesh),

10) AIR BREATHER

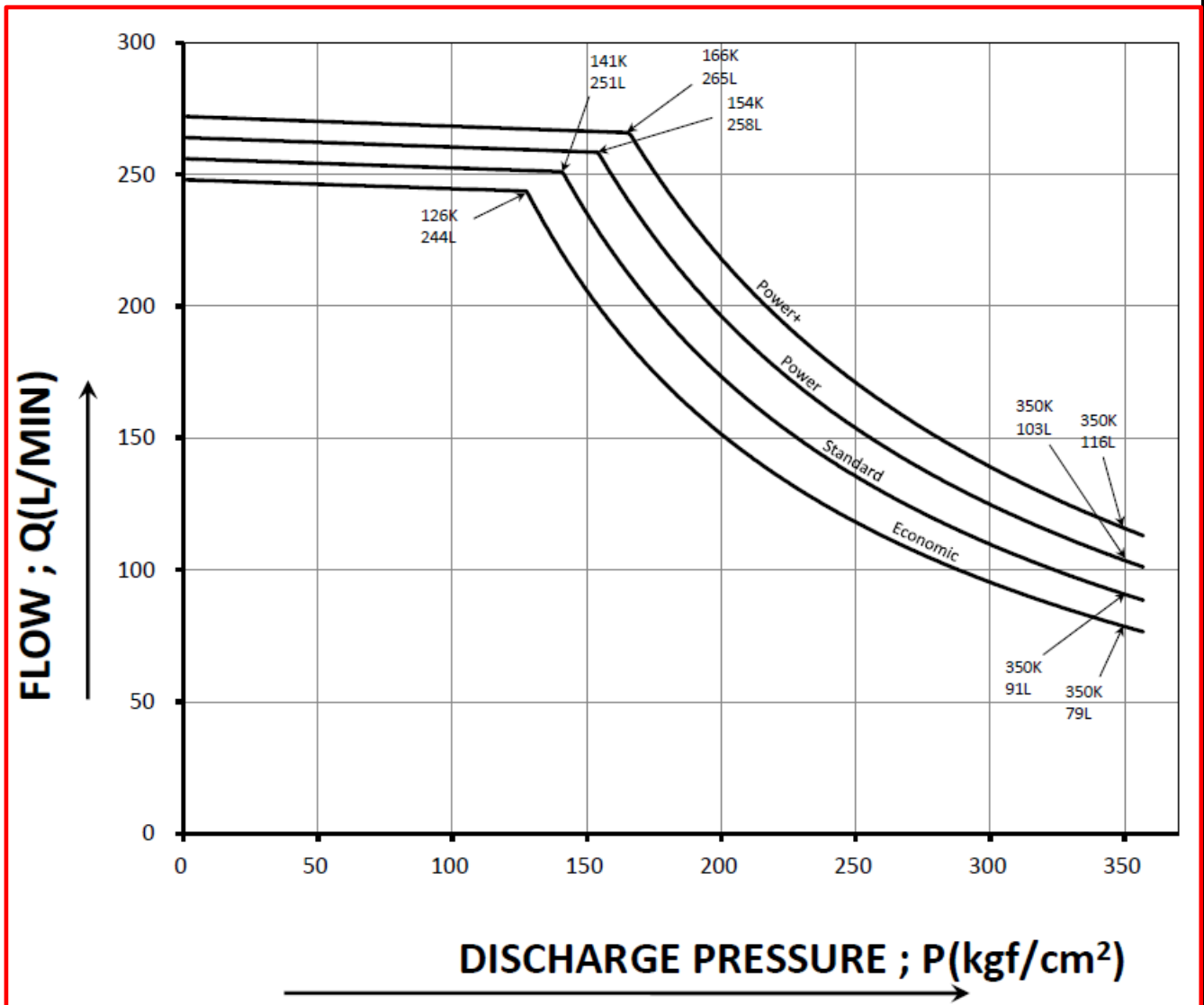
TYPE : PARER ELEMENT  
 CRACKING PRESSURE : 0.45 bar (0.46 kgf/cm<sup>2</sup>) @ 1 Liter/min  
 VACUUM RELIEF PRESSURE : 0.04 ~ 0.05 bar @ 1 Liter/min  
 FILTRATION EFFICIENCY&RATING : 99.5 % (β 10 = 200), 10μ  
 FILTRATION SIZE : 590 cm<sup>2</sup> (∅ 45 x 67 mm)

MODEL	DX300LC-7M	DWG No		8/24
-------	------------	--------	--	------



- PUMP PERFORMANCE CURVE

CONTENT		UNIT	VALUE
P+ MODE	INPUT rpm	rpm	1700
	INPUT POWER	kW	166.4
P MODE	INPUT rpm	rpm	1650
	INPUT POWER	kW	150.4
S MODE	INPUT rpm	rpm	1600
	INPUT POWER	kW	133.5
E MODE	INPUT rpm	rpm	1550
	INPUT POWER	kW	117.4



MODEL	DX300LC-7M	DWG No	9/24
-------	------------	--------	------

## 4. SWING MECHANISM

### 1) SWING MOTOR

TYPE	:	AXIAL PISTON
DISPLACEMENT	:	172.1 cc/rev
CROSSOVER RELIEF VALVE SETTING	:	289 bar(295 kgf/cm <sup>2</sup> ) @ 254 Liter/min
MAX. SUPPLY FLOW	:	248.4 Liter/min
MOTOR SHAFT SPEED	:	1,443 rpm
MOTOR SHAFT TORQUE	:	792 N.m(80.8kgf.m)
ACCESSARY VALVES	:	SWING REACTIONLESS VALVE
WEIGHT	:	66.5 kg

### 2) SWING REDUCTION GEAR

DRIVE TYPE	:	2-STAGE PLANETARY GEAR
REDUCTION RATIO	:	24.74
MAX. OUTPUT SPEED	:	58.34 rpm
MAX. OUTPUT TORQUE	:	19.6 kN.m(1,999 kgf.m)
WEIGHT (INCLUDED MOTOR)	:	387 kg

### 3) PINION GEAR

TYPE	:	SPUR GEAR
GEAR P.C.D.	:	∅196 mm
No. OF TEETH	:	14
MODULE	:	14

### 4) SWING BEARING

TYPE	:	BALL BEARING, INTERNAL GEAR
GEAR P.C.D.	:	∅1,190 mm
No. OF TEETH	:	85
BALL DIA.	:	∅41.275 mm
RACE O.D.	:	∅1,474 mm
RACE HEIGHT	:	120 mm
STATIC THRUST LOAD	:	487,800 kg
WEIGHT	:	413 kg

### 5) SWING PERFORMANCE

MAX. SWING SPEED	:	9.61 rpm
MAX. SWING SPEED (EFF.=0.98)	:	9.42 rpm
MAX. SWING TORQUE	:	119 kN.m(12,137 kgf.m)
MAX. SWING TORQUE (EFF.=0.81)	:	96.4 kN.m(9,831 kgf.m)

### 6) PARKING BRAKE

CONTROL TYPE	:	PILOT PRESSURE, MECHANICAL
BRAKE TORQUE	:	686 N.m(70 kgf.m)
BRAKE RELEASE PRESSURE	:	26 bar(26.5 kgf/cm <sup>2</sup> )

MODEL	DX300LC-7M	DWG No		10/24
-------	------------	--------	--	-------

## 7) MOTOR ACCESSARY

BRAKE TIME DELAYER	:	5.0(+3/-0) sec
SELECT V/V CRACKING PRESSURE	:	6 bar (6 kgf/cm <sup>2</sup> )

## 5. TRAVEL SYSTEM

### 1) TRAVEL MOTOR

TYPE	:	AXIAL PISTON, 2-SPEED
DISPLACEMENT	:	249.2 / 138 cc/rev
CROSSOVER RELIEF VALVE SETTING	:	343 bar (350 kgf/cm <sup>2</sup> ) @ 25 Liter/min
MAX. SUPPLY FLOW	:	250.3 Liter/min
MOTOR SHAFT SPEED	:	1,004 / 1,814 rpm
MOTOR SHAFT TORQUE	:	1,360/753 N.m(138.7 / 76.8 kgf.m)

### 2) REDUCTION GEAR

TYPE	:	2-STAGE PLANETERY GEAR
REDUCTION GEAR RATIO	:	46.12
MAX. OUTPUT SPEED	:	21.8 / 39.3 rpm
MAX. OUTPUT TORQUE	:	62.7/34.7 kN.m(6,398 / 3,543 kgf.m)
WEIGHT (INCLUDE MOTOR)	:	406 kg

### 3) SPROCKET

SPROCKET P.C.D.	:	∅732.81 mm
TRACK LINK PITCH	:	216 mm
No. OF TEETH	:	21
WEIGHT	:	82 kg

### 4) TRAVELLING PERFORMANCE

TRAVELLING SPEED	:	3.0 / 5.4 km/hr
TRAVELLING SPEED(EFF.=98.0%)	:	2.9 / 5.2 km/hr
TRACTION FORCE	:	34.9 / 19.3 ton
TRACTION FORCE (EFF.=81.0%)	:	28.3 / 15.7 ton
GRADEABILITY	:	70 %

### 5) PARKING BRAKE

CONTROL TYPE	:	MAIN PRESSURE, MECHANICAL
BRAKE TORQUE	:	853 N.m(87 kgf.m )
BRAKE RELEASE PRESSURE	:	8 bar (8.2 ± 1.5 kgf/cm <sup>2</sup> )

MODEL	DX300LC-7M	DWG No		11/24
-------	------------	--------	--	-------

## 6. UNDER CARRIAGE

### 1) RECOIL MECHANISM

TYPE	:	HYDRAULIC ADJUSTED
RECOIL SPRING PRELOAD	:	19,100 kg
RECOIL SPRING MAX. LOAD	:	30,890 kg
RECOIL SPRING STROKE	:	50 mm
ADJUSTER TYPE	:	GREASE CYLINDER
WEIGHT	:	172.4 kg

### 2) ROLLERS ; LOWER

FLANGE TYPE	:	SINGLE
Q'TY PER SIDE	:	9
DIA.	:	∅ 180 mm
WEIGHT	:	57.2 kg

### 3) ROLLERS ; UPPER

FLANGE TYPE	:	SINGLE
Q'TY PER SIDE	:	2
DIA.	:	∅ 142 mm
WEIGHT	:	26.5 kg

### 4) FRONT IDLER

DIA.	:	∅ 580 mm
WEIGHT	:	190 kg

### 5) TRACK LINK

No. OF LINK PER SIDE	:	48
LINK PITCH	:	216 mm
PIN DIA.	:	∅ 44.75 mm
TRACK GUAGE	:	2,600 mm
TUMBLER DISTANCE	:	4,040 mm
WEIGHT (600mmG, Included shoe)	:	1,880 kg
WEIGHT (700mmG, Included shoe)	:	2,160 kg
WEIGHT (800mmG, Included shoe)	:	2,350 kg
WEIGHT (850mmG, Included shoe)	:	2,440 kg
WEIGHT (600mmDG, Included shoe)	:	2,230 kg

### 6) TRACK SHOE

No. OF SHOE PER SIDE	:	48
----------------------	---	----

MODEL	DX300LC-7M	DWG No		12/24
-------	------------	--------	--	-------

SHOE WIDTH (mm)	GROUND PRESSURE kgf/cm <sup>2</sup> (psi)	MACHINE WEIGHT (ton)
STD. 600TG	0.61 (8.7)	31.8
OPT. 700TG	0.53 (7.5)	32.3
OPT. 800TG	0.47 (6.7)	32.7
OPT. 850TG	0.45 (6.4)	32.9
OPT. 600DG	0.62 (8.8)	32.5

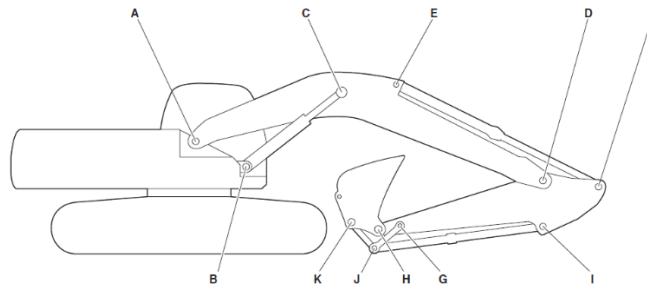
## 7. HYDRAULIC CYLINDERS

	BOOM	ARM	BUCKET(1)	BUCKET(2)	SLR BUCKET
QUANTITY	2	1	1	1	1
BORE	140	150	135	135	95
STROKE	1,450	1,670	1,150	1,150	900
ROD DIA.	95	105	90	90	65
CLOSED LENGTH	2,010	2,270	1,710	1,710	1,375
HEAD END CUSHION	X	O	X	X	X
ROD END CUSHION	O	O	O	O	O
MAKER	DONGYANG	DONGYANG	DONGYANG	DONGYANG	DONGYANG
APPLIED ARM (mm)	-	-	2,500	3,750 3,100 2,850	7,000
WEIGHT	252 Kg	322 Kg	236 Kg	236 Kg	93 Kg

MODEL	DX300LC-7M	DWG No		13/24
-------	------------	--------	--	-------

## 8. FRONT

### 1) FRONT LINK PIN SIZES



POINT	STD			SLR		
	DIA. (mm)	LENGTH (mm)	Weight (Kg)	DIA. (mm)	LENGTH (mm)	Weight (Kg)
A	105	998	72.0	105	998	72.0
B	100	244	16.5	100	244	16.5
C	90	890	44.0	90	890	44.0
D	100	634	40.5	100	626	40.0
E	90	261	14.5	90	261	14.5
F	90	261	14.5	90	261	14.5
G	80	491	19.5	65	364	9.5
H	90	627	29.0	65	434	11.0
I	90	239	13.5	65	203	6.5
J	90	498	25.5	65	364	9.5
K	90	627	29.0	65	434	11.0

### 2) FRONT ATTACHMENTS

#### 2-1) BOOM

	LENGTH (mm)	WEIGHT (kg)
STD. BOOM	6,245	2,230
HD BOOM	6,245	2,410
SLR BOOM	10,000	3,066

#### 2-2) ARM

	LENGTH (mm)	WEIGHT (kg)	DIGGING FORCE (NOM./PRESS.UP, ton)
STD. ARM	3,100	1,045	[SAE] 13.0 / 13.7 ,
HD ARM 1	3,100	1,140	[ISO] 13.2 / 14.0 → 130 / 137 [kN]
SHORT ARM 1	2,500	967	[SAE] 15.7 / 16.6 , [ISO] 16.1 / 17.0 → 158 / 167 [kN]
HD ARM 2	2,850	1,085	[SAE] 14.7 / 15.5 , [ISO] 15.0 / 15.8 → 147 / 156 [kN]
LONG ARM	3,750	1,178	[SAE] 11.5 / 12.2 , [ISO] 11.7 / 12.4 → 115 / 122 [kN]
SLR ARM	7,000	1,448	[SAE] 7.0 / 7.4 [ISO] 7.1 / 7.5 → 70 / 74 [kN]

MODEL	DX300LC-7M	DWG No	14/24
-------	------------	--------	-------

2-3) BUCKET

Bucket Type	CAPACITY (m <sup>3</sup> )			BUCKET WIDTH (mm)		WEIGHT (kg)	DIGGINGFORCE (NOM./PRESS.UP, ton)
	CECE	SAE	Struck	W/ Cutter	W/O Cutter		
G.P.	0.70	0.8		1167	1083	847	[SAE] 16.7 / 17.6 [ISO] 18.9 / 20.0
	0.90	1.03		1,037	962	971	
	0.99	*1.16		-	1432	1180	
	1.10	1.27		1,445	1376	1090	
	1.30	1.5		1,657	1582	1199	
	1.50	1.75		1,867	1792	1301	
H Class	0.94	1.04		1108	1070	1024	[SAE] 17.4 / 18.3 [ISO] 19.1 / 20.2
	1.10	1.2		1258	1220	1104	
	1.31	1.47		1458	1420	1190	
	1.30	**1.5		1657	1582	1234	
	1.41	1.6		1721	1640	1482	
	1.52	1.72		1658	1620	1338	
H+ Class	1.31	1.47		1458	1420	1296	
S Class	1.08	1.2		1242	1210	1390	[SAE] 17.0 / 17.9 [ISO] 19.1 / 20.2
	1.29	1.45		1442	1410	1509	
	1.39	1.57		1542	1510	1568	
	1.38	***1.6		1721	1640	1482	
S+ Class	1.29	1.45		1442	1410	1673	
Ditch Cleaning	0.38	0.45		-	1500	357	[SAE] 8.6 / 9.1 [ISO] 10.0 / 10.5
	0.46	0.54		-	1800	405	
	0.55	0.64		1167	1083	423	

\*1.16M3 : Lock Bucket  
 \*\* 1.5M3 : R1H Bucket  
 \*\*\* 1.6M3 : R1S Bucket

2-4) BUCKET & ARM COMBINATIONS

MODEL	DX300LC-7M	DWG No		15/24
-------	------------	--------	--	-------

Bucket Type	Capacity (m <sup>3</sup> )	Bucket Width (mm)		Weight (Kg)	6.245 HD BOOM			SLR BOOM
		SAE	W/Cutter		W/O Cutter	2.5 A	2.85 HD A	3.1 HD A
G.P	0.8	1167	1083	847	A	A	A	-
	1.03	1,037	962	971	A	A	A	-
	*1.16	-	1432	1180	A	A	A	-
	1.27	1,445	1376	1090	A	A	A	-
	1.5	1,657	1582	1199	A	A	B	-
	1.75	1,867	1792	1301	B	C	C	-
H Class	1.04	1108	1070	1024	A	A	A	-
	1.2	1258	1220	1104	A	A	A	-
	1.47	1458	1420	1190	A	A	B	-
	**1.5	1657	1582	1234	A	A	B	-
	1.6	1721	1640	1264	A	B	B	-
	1.72	1658	1620	1338	B	C	C	-
H+ Class	1.47	1458	1420	1296	A	A	B	-
S Class	1.2	1242	1210	1391	A	A	A	-
	1.45	1442	1410	1509	A	B	B	-
	1.57	1542	1510	1568	B	B	C	-
	***1.6	1721	1640	1482	B	B	C	-
S+ Class	1.45	1442	1410	1673	B	B	C	-
Ditch Cleaning	0.45	-	1500	357	-	-	-	A
	0.54	-	1800	405	-	-	-	A
	0.64	1167	1083	423	-	-	-	B

\*1.16M3 : Lock Bucket

\*\* 1.5M3 : R1H Bucket

\*\*\* 1.6M3 : R1S Bucket

Based on ISO 10567 and SAE J296, arm length without quick change clamp

A : Suitable for materials with density of 2,100kg/m<sup>3</sup> (3,500lb/yd<sup>3</sup>) or less

B : Suitable for materials with density of 1,800kg/m<sup>3</sup> (3,000lb/yd<sup>3</sup>) or less

C : Suitable for materials with density of 1,500kg/m<sup>3</sup> (2,500lb/yd<sup>3</sup>) or less

D : Suitable for materials with density of 1,200kg/m<sup>3</sup> (2,000lb/yd<sup>3</sup>) or less

- : Not recommended

3) OPTION PIPINGS

3-1) ONE-WAY PIPING

MAIN & PILOT PIPING

: OPTION

MODEL	DX300LC-7M	DWG No		16/24
-------	------------	--------	--	-------

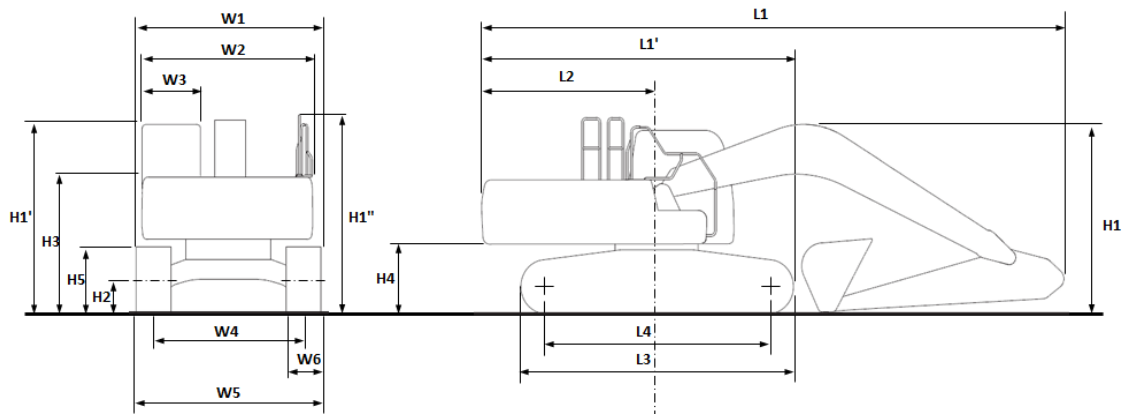


FRONT SUPPLY PIPING	:	OPTION
AVAILABLE ATTACHMENT	:	BREAKER
3-2) TWO-WAY PIPING		
MAIN & PILOT PIPING	:	OPTION
FRONT SUPPLY PIPING	:	OPTION
AVAILABLE ATTACHMENT	:	BUCKET TILT CYLINDER, CLAMSHELL, CRUSHER
3-3) ROTATING PIPING		
MAIN & PILOT PIPING	:	OPTION
FRONT SUPPLY PIPING	:	OPTION
AVAILABLE ATTACHMENT	:	ROTATING GRAPPLE
3-4) AGS SYSTEM (AUTO GREASING SYSTEM)		
APPLIED GREASE SPEC		
- SPECIES: LITHIUM EP GREASE OR EQUIVALENT		
- NLGI GRADE : 2 GRADE		
PUMP		
- MAX. OPERATING PRESSURE : 300 BAR		
- RESEVIOR CAPACITY : 6.3 LITER		
- OPERATING TIME : 12MIN		
- OPERATING INTERVAL TIME : 1HR		
- IP GRADE : IP 56		
- 3.1 ARM, Non-Front and SLR not provided with AGS		

MODEL	DX300LC-7M	DWG No	17/24
-------	------------	--------	-------

## 9. DIMENSION AND WORKING RANGE

### 1) DIMENSION [One-piece BOOM]

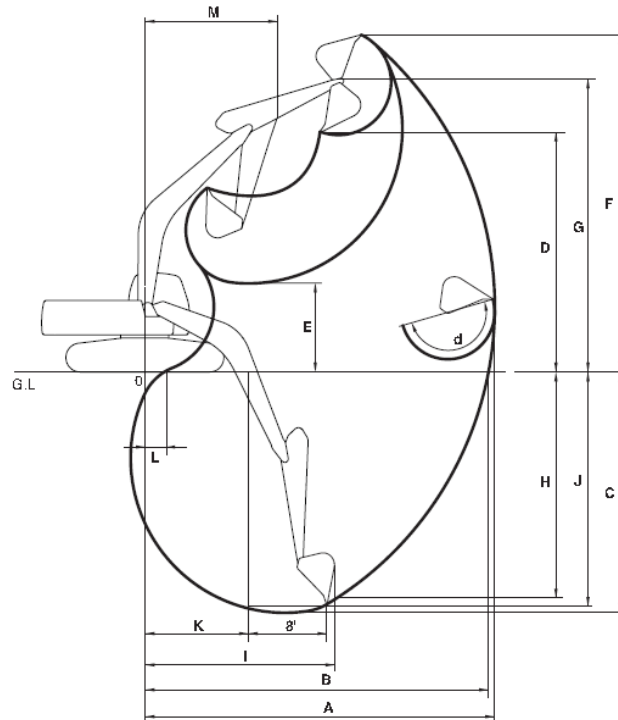


Model		ONE-PIECE BOOM						
Dimension		STD	OPT1	OPT2	OPT3	OPT4		
Boom		6.245 HD	6.245 HD	6.245 HD	10.0	6.245		
Arm		3.1 HD	2.85 HD	2.5	7.0	3.75		
Bucket		1.5 H	1.5 H	1.5 H	0.64	1.5 H		
Undercarriage (Track+Grouser)		LC+TG	LC+TG	LC+TG	LC+TG	LC+TG		
Overall	L1	Overall Length		10,610	10,710	10,770	14,390	10,705
	H1	Overall Height	Boom	3,265	3,495	3,385	3,365	3,455
			Hose	3,370	3,615	3,495	3,475	3,575
			Cabin	3,050	3,050	3,050	3,050	3,050
	W1	Overall Width(SHIPPING)		3,200	3,200	3,200	3,200	3,200
	R1	Rear Swing Radius		3,230	3,230	3,230	3,230	3,230
H2	Ground Clearance*		*470	*470	*470	*470	*470	
Swing Body	W2	House Width	Frame only	2,960	2,960	2,960	2,960	2,960
			w/Protector	3,070	3,070	3,070	3,070	3,070
	W3	Cabin Width		1,010	1,010	1,010	1,010	1,010
	H3	Height Over Cover		2200	2200	2200	2200	2200
H4	Counterweight Clearance*		*1120	*1120	*1120	*1120	*1120	
Undercarriage	H5	Track Height*		*970	*970	*970	*970	*970
	L3	Track Length		4,950	4,950	4,950	4,950	4,950
	L4	Tumbler Distance		4,040	4,040	4,040	4,040	4,040
	W5	Undercarriage Width	STD	3,200	3,200	3,200	3,200	3,200
	W6	Shoe Width		600	600	600	600	600
	-	Grouser Height		30	30	30	30	30

\* : without grouser

MODEL	DX300LC-7M	DWG No		18/24
-------	------------	--------	--	-------

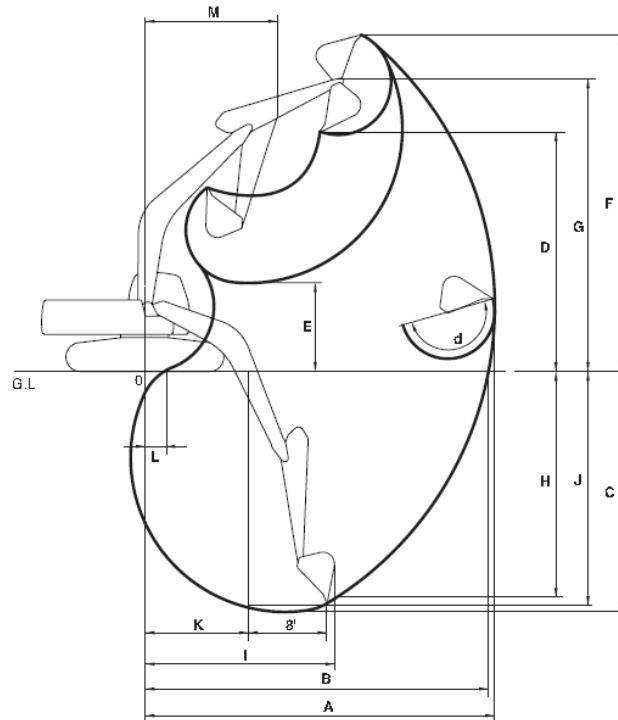
2) WORKING RANGE [METRIC]



BOOM TYPE (ONE PIECE)	(mm)		6,245 / 6,245HD			10,000
ARM TYPE	(mm)		2,500	2,850 / 2,850HD	3,100 / 3,100HD	7,000
BUCKET TYPE (SAE)	(m <sup>3</sup> )		1.5 H	1.5 H	1.5 H	0.64 G
MAX. DIGGING REACH	(mm)	A	10,110	10,365	10,670	17,515
MAX. DIGGING REACH (GROUND)	(mm)	B	9,905	10,165	10,475	17,395
MAX. DIGGING DEPTH	(mm)	C	6,650	7,000	7,250	13,795
MAX. LOADING HEIGHT	(mm)	D	7,035	7,045	7,325	11,980
MIN. LOADING HEIGHT	(mm)	E	3,410	3,060	2,805	2,340
MAX. DIGGING HEIGHT	(mm)	F	9,935	9,895	10,245	14,195
MAX. BUCKET PIN HEIGHT	(mm)	G	8,585	8,600	8,880	13,205
MAX. VERTICAL WALL DEPTH	(mm)	H	3,620	3,765	3,940	9,675
MAX. RADIUS VERTICAL	(mm)	I	8,365	8,575	8,830	12,995
MAX. DEPTH TO 8' LINE	(mm)	J	6,415	6,760	7,050	13,655
MIN. RADIUS 8' LINE	(mm)	K	2,965	2,900	2,990	5,145
MIN. DIGGING REACH	(mm)	L	2,075	1,745	715	1,100
MIN. SWING RADIUS	(mm)	M	4,045	4,075	4,040	6,105
BUCKET ANGLE	(deg)	d	175	175	175	170

MODEL	DX300LC-7M	DWG No		19/24
-------	------------	--------	--	-------

3) WORKING RANGE [FEET]



BOOM TYPE (ONE PIECE)	(mm)				
ARM TYPE	(mm)		8' 2"	9' 4" 9' 4" HD	10' 2" 10' 2" HD
BUCKET TYPE (SAE)	(m <sup>3</sup> )		1.96	1.96	1.96
MAX. DIGGING REACH	(mm)	A	33' 2"	34' 0"	35' 0"
MAX. DIGGING REACH (GROUND)	(mm)	B	32' 6"	33' 4"	34' 4"
MAX. DIGGING DEPTH	(mm)	C	21' 10"	22' 12"	23' 9"
MAX. LOADING HEIGHT	(mm)	D	23' 1"	23' 1"	24' 0"
MIN. LOADING HEIGHT	(mm)	E	11' 2"	10' 0"	9' 2"
MAX. DIGGING HEIGHT	(mm)	F	32' 7"	32' 6"	33' 7"
MAX. BUCKET PIN HEIGHT	(mm)	G	28' 2"	28' 3"	29' 2"
MAX. VERTICAL WALL DEPTH	(mm)	H	11' 11"	12' 4"	12' 11"
MAX. RADIUS VERTICAL	(mm)	I	27' 5"	28' 2"	28' 12"
MAX. DEPTH TO 8' LINE	(mm)	J	21' 1"	22' 2"	23' 2"
MIN. RADIUS 8' LINE	(mm)	K	9' 9"	9' 6"	9' 10"
MIN. DIGGING REACH	(mm)	L	6' 10"	5' 9"	2' 4"
MIN. SWING RADIUS	(mm)	M	13' 3"	13' 4"	13' 3"
BUCKET ANGLE	(deg)	d	175	175	175

MODEL	DX300LC-7M	DWG No	20/24
-------	------------	--------	-------

## 10. LIFTING CAPA.

- Ref. Attached file

## 11. PERFORMANCE DATA

### 1) MAIN RELIEF PRESSURE

WORKING, TRAVEL : 343 [+10/0] bar (350 [+10/0] kg/cm<sup>2</sup>)  
PRESSURE UP : 363 [+10/0] bar (370 [+10/0] kg/cm<sup>2</sup>)

### 2) ACTUATOR SPEED

OPERATION		UNIT	S MODE	P+ MODE
BOOM	UP	SEC	3.4±0.3	3.2±0.3
	DOWN	SEC	2.6±0.3	2.5±0.3
ARTI. BOOM	UP	SEC	-	-
	DOWN	SEC	-	-
ARM	CROWD	SEC	3.8±0.4	3.5±0.4
	DUMP	SEC	3.0±0.3	2.6±0.3
BUCKET	CROWD	SEC	2.9±0.3	2.5±0.3
	DUMP	SEC	2.5±0.3	2.1±0.3
SWING (3 REVOLUTIONS)		SEC	19.7±2.0	18.4±1.8
JACK-UP SPEED (3 TURNS)	LOW	SEC	39.4±3.9	37.1±3.7
	HIGH	SEC	21.8±2.1	20.5±2.1
TRAVEL SPEED (20 m)	LOW	SEC	25.5±2.6	24.0±2.4
	HIGH	SEC	14.5±1.5	13.5±1.4
TRAVEL DEVIATION (20 m)	LOW	mm	MAX. 150	MAX. 150
	HIGH	mm	MAX. 150	MAX. 150

## 12. NOISE LEVEL

L<sub>WA</sub> GUARANTEED SOUND POWER LEVEL : 105 dB(A) (2000/14/EC)  
MEASURED SOUND POWER LEVEL : 104 dB(A) (2000/14/EC)  
L<sub>pA</sub> OPERATOR NOISE : 70 dB(A) (ISO 6396)

MODEL	DX300LC-7M	DWG No	21/24
-------	------------	--------	-------

### 13. SUB GROUP WEIGHT

ITEM		UNIT	FIGURE	REMARKS	
SUPER STRUCTURE W/O FRONT		kg	13,740	WITH COUNTER WEIGHT	
COUNTER WEIGHT		kg	5,400		
LOWER STRUCTURE ASS'Y (600mm TG)		kg	11,260		
FRONT ASS'Y		kg	6,760		
BOOM (6.245 m HD)		kg	2,410	WITH BUSH	
ARM (3.1m HD)		kg	1,140	WITH BUSH	
BUCKET (1.5 m3 H Class)		kg	1,190		
BOOM CYL. (ea)		kg	252		
ARM CYL.		kg	331		
BUCKET CYL.		kg	236		
OPTION	BOOM	10.0m	kg	3,066	
	ARM	2.5m	Kg	967	
		2.85m HD	kg	1,085	
		7.0m	kg	1,448	

MODEL	DX300LC-7M	DWG No		22/24
-------	------------	--------	--	-------

## 14. USER SERVICE DATA

No.	Items to check	Service	Qty.	Service interval [hours]						
				10	50	250	500	1,000	2,000	4,500
1	Arm, Bucket Joint Pin <sup>1)</sup>	Grease	6	F100	W10					
2	Boom, Arm Joint Pin <sup>1)</sup>	Grease	11	F100		W10				
3	Swing Bearing <sup>1)</sup>	Grease	3		W10					
4	Pinion Gear (Swing)	Grease	1							
5	Swing Reduction Gear	Grease	1					W10		
		Gear Oil	7 L	V			F			
6	Track Spring	Grease	2				W10,V			
7	Travel Reduction Gear	Gear Oil	2 x 7 L				F, V			
8	Engine Oil	Engine Oil	36 L	V						
9	Hydraulic Oil Tank <sup>2)</sup>	Hydraulic Oil	280(165) L	V						
10	Fuel Tank <sup>3)</sup>	Diesel	500(490) L	V	D					
11	Pre Fuel Filter and Water Separator	Cartridge	1	V, D						
12	Coolant	Coolant	44.1 L	V						
13	Hydraulic Oil Return Filter	Element	1			F				
14	Pilot Filter	Element	1			F				
15	Hydraulic Oil Suction Strainer	Strainer	1						C	
16	Engine Oil Filter	Cartridge	1							
17	Main Fuel Filter	Cartridge	1							
18	Air Cleaner (Outer)	Element	1				C			
	Air Cleaner (Inner)	Element	1							
19	Air Conditioner Filter (Outer)	Element	1				C			
	Air Conditioner Filter (Inner)	Element	1				C			
20	Air Breather Filter	Element	1							
21	Fuel Cap Filter	Element	1							
22	Breaker Filter (Opt)	Cartridge	1							
23	Oil Bath Pre cleaner (Opt)	Engine Oil	9.5 L		V					
		Element	1						C	
	Radiator Core	Core	1				C			
	Fuel cooler Core	Core	1				C			
	Oil Cooler Core	Core	1				C			
	Intercooler Core	Core	1				C			
	Aircon Condenser Core	Core	1				C			
	Additional Water Separator(Opt)	Strainer	1	V,D			C			

V: Maintenance and Refill  
C: Cleaning  
D: Drain Water  
F: First Time Exchange Only  
F100: Every 10 Hours For First 100 Hours  
W10: Every 10 Hours If Operating In Water

MODEL	DX300LC-7M	DWG No		23/24
-------	------------	--------	--	-------

: Replacement On Every Interval

1) If Auto Grease System (optional) is equipped, check and refill the system

2) Total Tank Capacity(Level)

3) Total Tank Capacity(max. possible refueling volume)

## 15. CIRCUITS

- HYDRAULIC CIRCUIT : 950102-00853A
- ELECTRIC CIRCUIT : 950102-00988

MODEL

DX300LC-7M

DWG No

24/24